



FEDERAZIONE
ITALIANA
SPORT
ORIENTAMENTO

AETERNA ROMA

RUN ORIENTEERING WEEK 2026



Aeterna Roma Run-Orienteering Week 2026

!!! NEW DATES !!! < wed. 4 – sun. 8 November 2026 >

Bulletin 1

ver.0302a

FISO – Italian Orienteering Federation is proud to welcome you to Rome – the “Eternal City” – in the first event in Rome ever including World Ranking competitions in the historical parks of Villa Doria Pamphilj and Villa Ada Savoia. Please refer to the event’s website <https://www.arrte.it> and Eventor pages for further specific information about WR events.

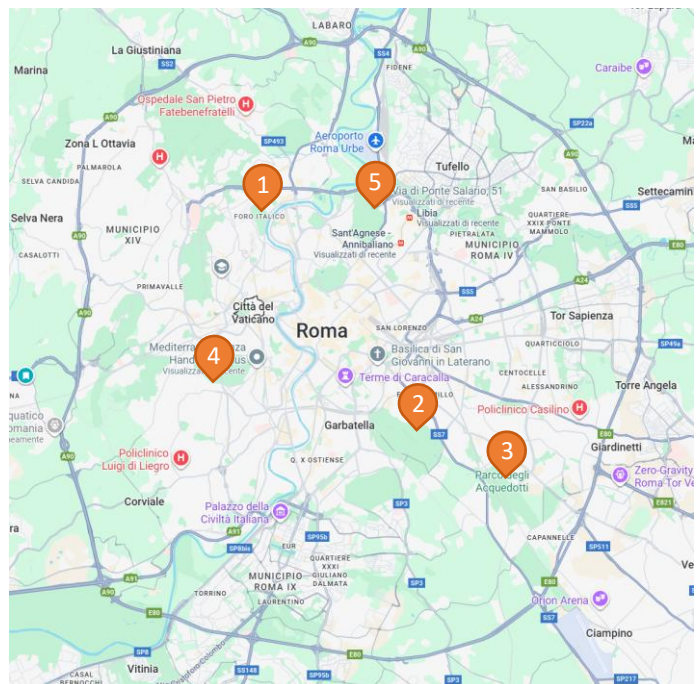
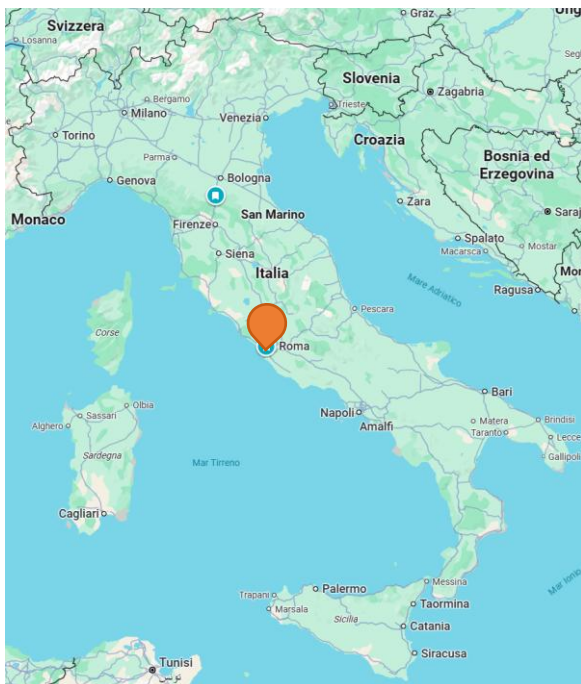
Sat 7 November 2026 WRE Villa Doria Pamphilj

Sun 8 November 2026 WRE Villa Ada Savoia

<https://eventor.orienteering.sport/Events/Show/8918>

<https://eventor.orienteering.sport/Events/Show/8919>

WHEREABOUTS AND PROGRAMME



- 1. Wed 4 Nov 2026 AFTERNOON (first start 14:00)**
Foro Italicum, Stadio dei Marmi - *viale Paolo Boselli*
GPS [41.933666, 12.458106](https://www.google.com/maps/place/41.933666,12.458106)
- 2. Thu 5 Nov 2026 AFTERNOON (first start 14:00)**
Parco della Caffarella, Vigna Cardinali - *viale Mario Leigheb*
GPS [41.867097, 12.524007](https://www.google.com/maps/place/41.867097,12.524007)
- 3. Fri 6 Nov 2026 AFTERNOON (first start 14:00)**
Parco degli Acquadotti - *via Lemonia / viale Appio Claudio*
GPS [41.851280, 12.558818](https://www.google.com/maps/place/41.851280,12.558818)
- 4. Sat 7 Nov 2026 MORNING (first start 10:00)**
Villa Doria Pamphilj - *via della Nocetta 30*
GPS [41.880426, 12.437612](https://www.google.com/maps/place/41.880426,12.437612)
- 5. Sun 8 Nov 2026 MORNING (first start 10:00)**
Villa Ada Savoia, laghetto - *piazza Nelson Mandela*
GPS [41.934823, 12.504740](https://www.google.com/maps/place/41.934823,12.504740)

▶ Please refer to “Embargoed Areas” section of this document and Eventor competition pages in order to check the competition areas that are prohibited to enter for potential competitors



FEDERAZIONE
ITALIANA
SPORT
ORIENTAMENTO

AETERNA
ROMA
RUN ORIENTEERING WEEK 2026



TRAVEL

Please note that no transport to or from the competition is provided by the organisers.

- By air – Rome Fiumicino and Rome Ciampino
- By rail – Roma Termini and Tiburtina are the main train stations.
- By local transport – Metro A and Metro B lines run closer to some of the competition areas
Please refer to local transport website for bus connections and more <https://www.atac.roma.it/en/home>
- By car – parking spots are not so easy to find in the area, we recommend the use of public transport

COMPETITION FORMAT, WINNING TIME, PUNCHING SYSTEM

Day 1 prologue: sprint distance competition (12-15' winning time) with maze-orienteeing sections

Day 2 prologue: score competition (30' maximum allowed time)

Day 3: sprint distance competition (12-15' winning time)

Day 4 and 5: middle distance (30-35' winning time) WRE competitions on both days

- Sport-Ident Air+ punching system is being used. Only normal SI-card are available for rent



Start lists for Men and Women Elite classes in WREs will be ordered according to IOF World Ranking rules based on the IOF World Rankings published on Tuesday 3 November 2026 (thus including any results up to the weekend of 31 Oct/1Nov). Highest ranked competitors start last. Competitors with no IOF World Ranking will start before ranked competitors, ordered by Italian Orienteering ranking or randomly allocated.

MAPS AND TERRAIN

Foro Italico: a real sport citadel inside the city, featuring the Stadium of Marbles, the Olympic stadium, the Olympic aquatics centre, the Stadio Centrale tennis court, the Italian Olympic Committee headquarter and the Sport University. The terrain is mainly asphalt with some gardens, sport fields and monuments, all with a negligible climb.

Map scale 1:4.000, 2m contours, ISSprOM 2019-2 standard, made in mar.2026 by Lorenzo Landi

Parco della Caffarella: though it is located less than 2 kilometres from the core of the city, Caffarella Park offers countryside views with mainly open areas, scattered trees and canopies, along with thicker vegetation areas on a quite hilly surface. Its area is included in the Appia Antica Regional Park and hosts a variety of archaeological treasures.

Map scale 1:4.000, 2,5m contours, ISOM 2017-2 standard, made in 2007-2022 by Remo Madella, revised in mar.2026

Latest used map: <https://www.livelox.com/Events/Show/43768/Ogni-Parco-un-Avventura-3>

Parco degli Acquedotti: one of the most characteristic “green” places in Rome, two lines of aqueducts run along the extension of this park included in the Appia Antica Regional Park. Quite flat in its morphology, the dominant vegetation type is pine trees, with many other scattered trees. Ruins and other remnants of Roman buildings can be found here and there.

Map scale 1:4.000, 2m contours, ISOM 2017-2 standard, made in 2019 by Remo Madella, revised in mar.2026

Latest used map: <https://www.livelox.com/Events/Show/127159/i-Sabati-dell-Orsa-2024-7>



FEDERAZIONE
ITALIANA
SPORT
ORIENTAMENTO



Villa Doria Pamphilj: monumental park with areas of open land, old pine trees and thicker mediterranean vegetation. Wide network of paths, both large and narrow. Climb is reduced, though some steep slope are still found. Terrain morphology is often simple. Runnability of the terrain varies from very fast to slow in the areas with the most intricate vegetation and undergrowth.

Map scale 1:10.000, 5m contours, ISOM 2017-2 standard, made in feb.2026 by Augusto Cavazzani

Previous ISSPrOM map: https://www.viborgok.dk/DOMA/show_map.php?user=Stig+Barrett&map=1579

Villa Ada Savoia: it's the wildest among of all the "Villas" in Rome, this park offers a variety of different terrain types, all in one. The eastern half reminds other monumental parks, such as Villa Doria Pamphilj, whilst the western part presents itself with wider areas with forest and thick vegetation (mostly impassable or very slow) and a maze of narrow paths, with moderate slopes and few microdetails, too.

Map scale 1:10.000, 5m contours, ISOM 2017-2 standard, made in feb.2026 by Augusto Cavazzani

Previous ISSPrOM map: https://www.pierregillain.be/Doma/show_map.php?user=pg&map=191

CLASSES

- Junior Classes: M/W 10- | 12- | 13-14 | 15-16 | 17-18 | 19-20
- Senior Classes: M/W ELITE | A | B
- Master Classes: M/W 35 | 40 | 45 | 50 | 55 | 60 | 65 | 70 | 75 | 81+
- Open Classes: WHITE (beginners) – RED (intermediate) – BLACK (advanced)

ENTRIES

- Foreign Federations: entries – both WREs and other events within the O-Week - must be made on ORIENS <https://oriens.welldan.it/index.php?menu=7&id=13>
- FISO members: entries can be made by the club responsible, using either FISO website or ORIENS

▶ *Men and Women Elite competitors shall register to both WRE competitions using Eventor website <https://eventor.orienteering.org/>, regardless of their nationality and FISO membership.*

ENTRY FEES AND DEADLINES

• SENIOR / MASTER CLASSES	All 5 events	Day 1	Day 2	Day 3	Day 4	Day 5
On or before <u>19 July</u>	90 €	12 €	12 €	20 €	25 €	25 €
On or before <u>13 September</u>	110€	15 €	15 €	25 €	30 €	30 €
On or before <u>25 October</u>	130€	18 €	18 €	30 €	35 €	35 €
• JUNIOR / OPEN CLASSES	All 5 events	Day 1	Day 2	Day 3	Day 4	Day 5
On or before <u>19 July</u>	50 €	8 €	8 €	12 €	12 €	12 €
On or before <u>13 September</u>	60 €	10 €	10 €	15 €	15 €	15 €
On or before <u>25 October</u>	80€	12 €	12 €	20 €	20 €	20 €



FEDERAZIONE
ITALIANA
SPORT
ORIENTAMENTO

AETERNA ROMA

RUN ORIENTEERING WEEK 2026



- SI-card rental 3€/day (only normal SI-card are available)
- **PAYMENT DETAILS**
 - iban** IT40I0830401807000007395412
 - owner** FEDERAZIONE ITALIANA SPORT ORIENTAMENTO
 - bank** Banca per il Trentino Alto Adige
 - BIC/SWIFT** CCRTIT2T76A
 - notes** please include the payment #id that is assigned to you by the online entry system or the club + names of the competitors for which the payment is done

ACCOMMODATION AND FOOD

No accommodation or catering is included in the entry fee.

Booking and catering options can be requested by email to: accommodation@arrte.it

VISAS

Check requirements to enter Italy: <https://vistoperitalia.esteri.it/?lang=en>

WEATHER (NOVEMBER AVERAGE)

Typically 8-17° C, 30% chance of rain

TRAINING OPPORTUNITIES

No formal training provided, though you may want to re-run past trainings and competitions that are published on <https://www.livelox.com/?tab=allEvents&timePeriod=allTime&country=ITA&q=ASD%20Orsa%20Maggiore&sorting=time>. Please contact the Event Director for other advice on suitable training areas and maps in Rome.

ORGANISATION AND CONTACTS

Event Director: Daniele Guardini
IOF Event Adviser: Francesco Giandomenico
Map Makers: Augusto Cavazzani / Lorenzo Landi / Remo Madella
Course planners: Stefano Zarfati
Course controllers: Lorenzo Landi / Giacomo Cataldo

Contact: +393290954604 info@arrte.it



FEDERAZIONE
ITALIANA
SPORT
ORIENTAMENTO

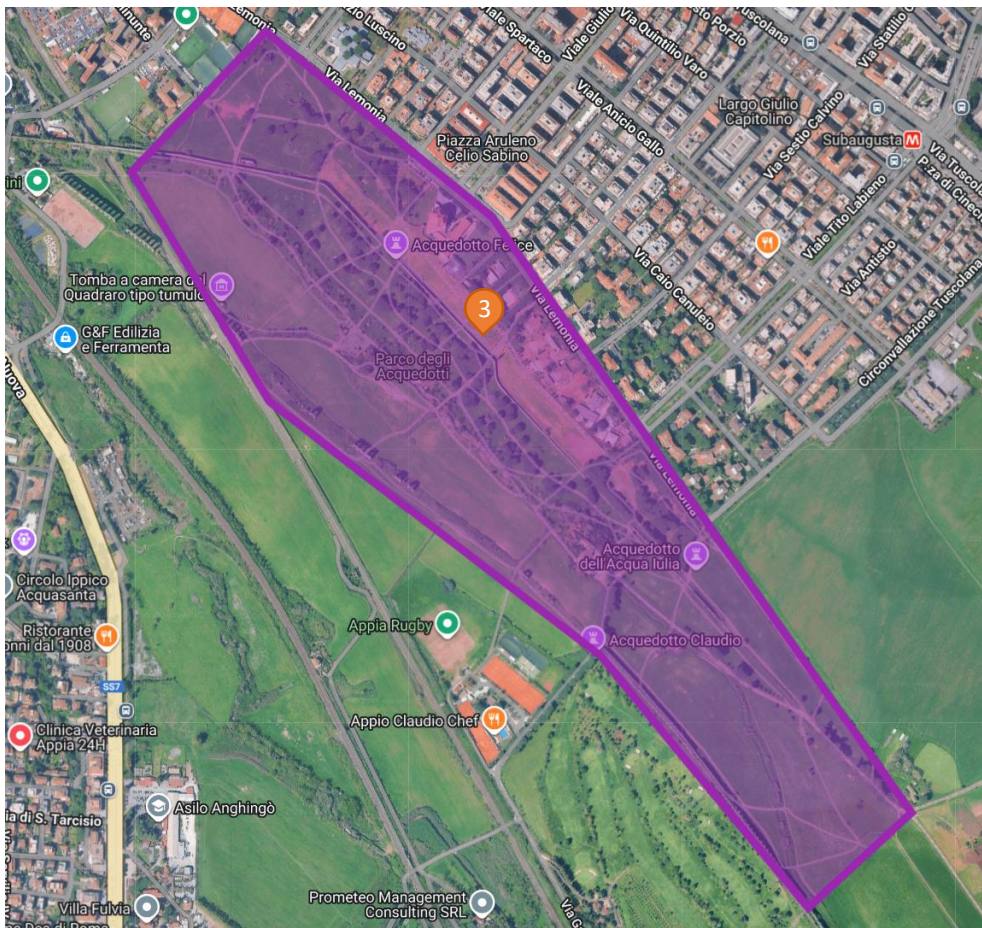
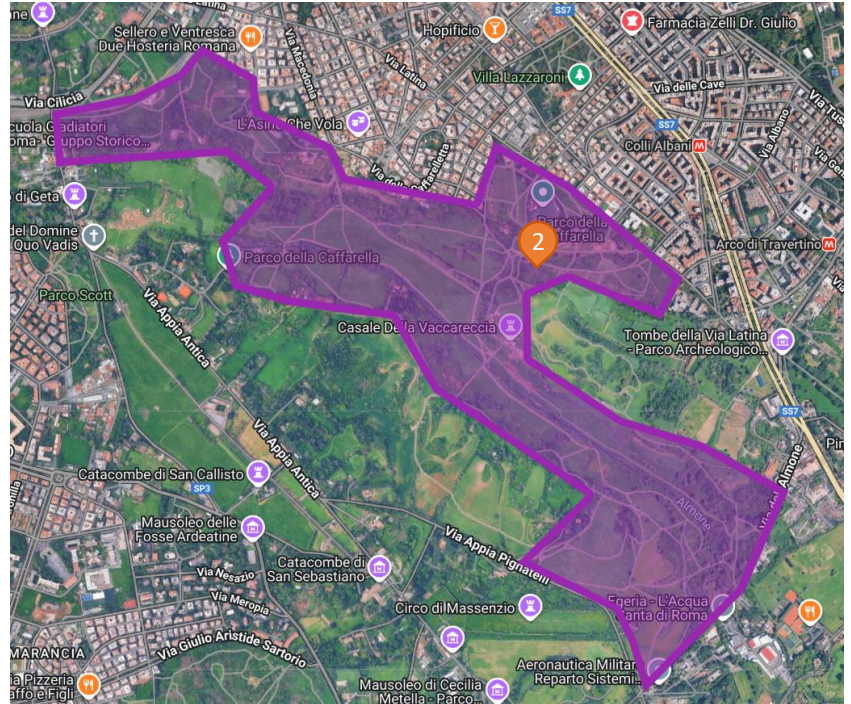
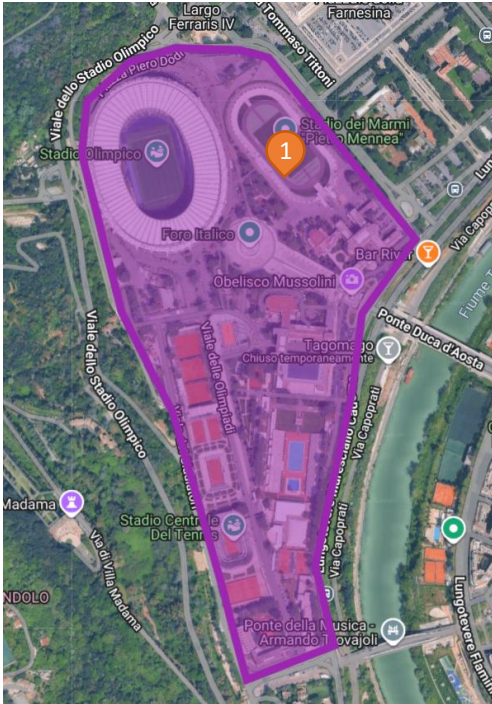
AETERNNA ROMA

RUN ORIENTEERING WEEK 2026



EMBARGOED AREAS

Please note that official embargoed areas and permitted routes are published on Eventor's competition pages.





FEDERAZIONE
ITALIANA
SPORT
ORIENTAMENTO

AETERNA ROMA

RUN ORIENTEERING WEEK 2026

